

# sympli®

**Crafted For Confidence.  
Tailored For You.**

*Spring Summer 2025*



**322392-0**  
**Fusion Dolman Top**  
*Cashew*

**327296**  
**Fusion Trumpet Pant**  
*Cashew*



IN-STORE STARTING AS EARLY AS  
DECEMBER 1ST, 2024. VISIT [NUORDER](#) TO  
CONFIRM THE NEXT AVAILABLE DELIVERY.  
\$2,500 minimum shipped per season.

Fall Season: July 1st - December 31st  
Spring Season: January 1st - June 30th

# Effortless Style Lies in the Art of Not Overthinking.

This season, we've meticulously curated an assortment of collections that offer versatility and style in silhouette, detail, and fit. Playful mixing and matching is encouraged (and celebrated!) as you seamlessly transition from day into evening with ease—free from worry.

Welcome to Spring 2025. Symplified.



PW21243  
Pop V-Neck Tank  
*White*

PW27324  
Pop Wide Capri  
*Black*



2864-2  
Drama Dress  
*Stone Blue*



22381-2  
Splice Angle Top  
*Epsom*

27251  
Side Slit Wide Capri  
*Epsom*





21120RS  
Go To Tank Relax Short  
*Navy*

HON25178-2  
Honeycomb Shrug  
*Navy*

27237  
Narrow Lantern Pant  
*Navy*



21120R  
Go To Tank Relax  
*Taupe*

323237-0  
Fusion Split Back Tunic  
*White*

27251  
Side Slit Wide Capri  
*Taupe*



21120R  
Go To Tank Relax  
*Cashew*

25168L  
Splice Vest Long  
*Stone Blue*


27317  
Splice Double Up Pant Crop  
*Cashew*



21191  
Deep V Trapeze Tank  
*White*

HON25194-3  
Honeycomb Great Cardigan  
*Navy*

2748S  
Narrow Pant Short  
*White*

 = All solid jersey colours available to order. Colours not shown will ship up to 6 weeks from order date. See page 32 for all colour options.

## SLEEVELESS



CF Measurement  
27"

### GO TO TANK RELAX

Style #: 21120R  
Sizes: 2 - 18  
M.S.R.P.: \$110.00  
Wholesale: \$50.00  
Color: **WHITE**  
Fabric Composition: **WHITE JERSEY: 92%  
NYLON/8% SPANDEX**



CF Measurement  
23"

### GO TO TANK RELAX SHORT

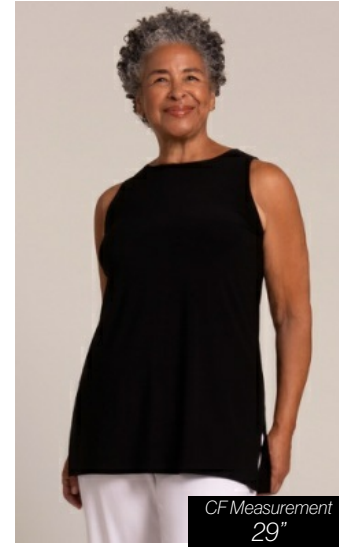
Style #: 21120RS  
Sizes: 2 - 18  
M.S.R.P.: \$95.00  
Wholesale: \$43.00  
Color: **WHITE**  
Fabric Composition: **WHITE JERSEY: 92%  
NYLON/8% SPANDEX**



CF Measurement  
27"

### GO TO TANK SLIM

Style #: 21120S  
Sizes: 2 - 18  
M.S.R.P.: \$91.00  
Wholesale: \$41.00  
Color: **WHITE**  
Fabric Composition: **WHITE JERSEY: 92%  
NYLON/8% SPANDEX**



CF Measurement  
29"

### SLEEVELESS NU IDEAL TUNIC

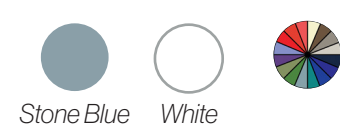
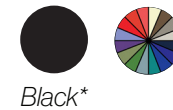
Style #: 21151  
Sizes: 2 - 18  
M.S.R.P.: \$126.00  
Wholesale: \$57.00  
Color: **BLACK**  
Fabric Composition: **94% POLYESTER/6%  
SPANDEX**



CF Measurement  
26"

### DEEP V TRAPEZE TANK

Style #: 21191  
Sizes: 2 - 18  
M.S.R.P.: \$126.00  
Wholesale: \$57.00  
Color: **STONE BLUE**  
Fabric Composition: **94% POLYESTER/6%  
SPANDEX**



### White Jersey Fabric Content

92% Nylon/ 8% Spandex

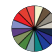
### \* Core Essentials Colours

Always In-Stock: Stock levels are based on forecasted demand and historical performance.

### CF means Center Front Seam

Our CF measurement is taken from the high shoulder point.



 = All solid jersey colours available to order. Colours not shown will ship up to 6 weeks from order date. See page 32 for all colour options.

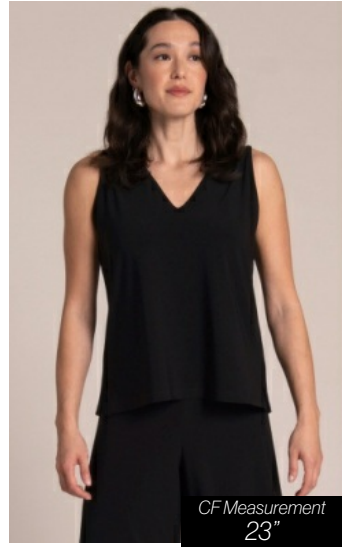
## SLEEVELESS



CF Measurement  
27"

### GO TO V-NECK TANK RELAX

Style #: 21230  
Sizes: 2 - 18  
M.S.R.P.: \$119.00  
Wholesale: \$54.00  
Color: BLACK  
Fabric Composition: 94% POLYESTER/6% SPANDEX



CF Measurement  
23"

### GO TO V-NECK TANK RELAX SHORT

Style #: 21230S  
Sizes: 2 - 18  
M.S.R.P.: \$99.00  
Wholesale: \$45.00  
Color: BLACK  
Fabric Composition: 94% POLYESTER/6% SPANDEX



CF Measurement  
27"

### SLVLESS GO TO CLASSIC T RELAX

Style #: 21118R  
Sizes: 2 - 18  
M.S.R.P.: \$110.00  
Wholesale: \$50.00  
Color: STONE BLUE  
Fabric Composition: 94% POLYESTER/6% SPANDEX



CF Measurement  
25"

### FLOUNCE MUSCLE TOP W/ DROP HEM

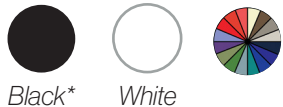
Style #: 21224  
Sizes: 2 - 18  
M.S.R.P.: \$154.00  
Wholesale: \$70.00  
Color: STONE BLUE  
Fabric Composition: 94% POLYESTER/6% SPANDEX



CF Measurement  
27"

### SLEEVELESS DBL LAYER SHELL W/ JEWEL NECK

Style #: 21226  
Sizes: 2 - 18  
M.S.R.P.: \$159.00  
Wholesale: \$72.00  
Color: LEMON CHIFFON  
Fabric Composition: 94% POLYESTER/6% SPANDEX



Black\* White



Black\* Navy



Black Stone Blue White



Black Stone Blue



Black Cashew Jacaranda



Lemon Chiffon Stone Blue Taupe



White

### White Jersey Fabric Content

92% Nylon/ 8% Spandex

### \* Core Essentials Colours

Always In-Stock: Stock levels are based on forecasted demand and historical performance.

### CF means Center Front Seam

Our CF measurement is taken from the high shoulder point.



= All solid jersey colours available to order. Colours not shown will ship up to 6 weeks from order date. See page 32 for all colour options.

## SLEEVELESS



CF Measurement  
22"

### FLARED SHELL

Style #: 21227

Sizes: 2 - 18

M.S.R.P.: \$154.00

Wholesale: \$70.00

Color: WHITE

Fabric Composition: WHITE JERSEY: 92%  
NYLON/8% SPANDEX



Black



Cashew



Lemon  
Chiffon



Navy



White



CF Measurement  
29"

### SLEEVELESS NU IDEAL TUNIC, PLACEMENT FLIP

Style #: 21151PF

Sizes: 2 - 18

M.S.R.P.: \$130.00

Wholesale: \$59.00

Color: SAND & SURF

Fabric Composition: 94% POLYESTER/6%  
SPANDEX



Sand & Surf



CF Measurement  
25"

### TRAPEZE TANK PLACEMENT FLIP

Style #: 21155PF

Sizes: 2 - 18

M.S.R.P.: \$119.00

Wholesale: \$54.00

Color: SAND & SURF

Fabric Composition: 94% POLYESTER/6%  
SPANDEX



Sand & Surf

CF means Center Front Seam

Our CF measurement is taken from the high shoulder point.

White Jersey Fabric Content

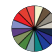
92% Nylon/ 8% Spandex



21155PF  
Trapeze Tank,  
Placement Flip  
Sand & Surf

27296PP  
Trumpet Leg Pant,  
Placement Print  
Surf & Sand



 = All solid jersey colours available to order. Colours not shown will ship up to 6 weeks from order date. See page 32 for all colour options.

## TOPS



CF Measurement  
27"

### GO TO CLASSIC T RELAX, SHORT SLEEVE

Style #: 22110R-1  
Sizes: 2 - 18  
M.S.R.P.: \$120.00  
Wholesale: \$54.00  
Color: BLACK  
Fabric Composition: 94% POLYESTER/6% SPANDEX



Black\* Navy



Stone Blue White



CF Measurement  
27"

### GO TO CLASSIC T RELAX, 3/4 SLEEVE

Style #: 22110R-2  
Sizes: 2 - 18  
M.S.R.P.: \$126.00  
Wholesale: \$57.00  
Color: WHITE  
Fabric Composition: WHITE JERSEY: 92% NYLON/8% SPANDEX



Black\* White\* Navy\* Cashew



Epsom Sepia Taupe Lapis



Batista Stone Blue Jacaranda



Ultraviolet



CF Measurement  
23"

### GO TO CLASSIC T RELAX SHORT

Style #: 22110RS-2  
Sizes: 2 - 18  
M.S.R.P.: \$106.00  
Wholesale: \$48.00  
Color: WHITE  
Fabric Composition: WHITE JERSEY: 92% NYLON/8% SPANDEX



Black\* White\* Navy



Cashew Epsom Jacaranda



Sepia Stone Blue Taupe



CF Measurement  
27"

### GO TO CLASSIC T SLIM, 3/4 SLEEVE

Style #: 22110S-2  
Sizes: 2 - 18  
M.S.R.P.: \$99.00  
Wholesale: \$45.00  
Color: WHITE  
Fabric Composition: WHITE JERSEY: 92% NYLON/8% SPANDEX



Black\* White\*

White Jersey Fabric Content  
92% Nylon/ 8% Spandex

### \* Core Essentials Colours

Always In-Stock: Stock levels are based on forecasted demand and historical performance.

CF means Center Front Seam

Our CF measurement is taken from the high shoulder point.



CF Measurement  
27"

### SOFT SQUARE NECK TOP, SHORT SLV

Style #: 22370-1  
Sizes: 2 - 18  
M.S.R.P.: \$146.00  
Wholesale: \$66.00  
Color: JACARANDA  
Fabric Composition: 94% POLYESTER/6% SPANDEX



Black Jacaranda Navy



Lemon Chiffon White



## TOPS



CF Measurement  
25"

### WEEKENDER TOP

Style #: 22163-2  
Sizes: 2 - 18  
M.S.R.P.: \$179.00  
Wholesale: \$81.00  
Color: WHITE  
Fabric Composition: 94% POLYESTER/6% SPANDEX



Black Navy White



CF Measurement  
25"

### SLOUCH SWEATSHIRT NO TIES, 3/4 SLEEVE

Style #: 22249NT-2  
Sizes: 2 - 18  
M.S.R.P.: \$159.00  
Wholesale: \$72.00  
Color: STONE BLUE  
Fabric Composition: 94% POLYESTER/6% SPANDEX



Black Jacaranda Navy



Stone Blue White



CF Measurement  
24"

### NU CLIP TOP PRINT

Style #: 22324P-4  
Sizes: 2 - 18  
M.S.R.P.: \$146.00  
Wholesale: \$66.00  
Color: BATISTA  
Fabric Composition: 94% POLYESTER/6% SPANDEX



Batista



CF Measurement  
21"

### BREEZY RAGLAN TOP

Style #: 22341-2  
Sizes: 2 - 18  
M.S.R.P.: \$161.00  
Wholesale: \$73.00  
Color: SEPIA  
Fabric Composition: 94% POLYESTER/6% SPANDEX



Black Navy Sepia



CF Measurement  
25"

### EZ TUCK TOP

Style #: 22366-1  
Sizes: 2 - 18  
M.S.R.P.: \$194.00  
Wholesale: \$88.00  
Color: SEPIA  
Fabric Composition: 94% POLYESTER/6% SPANDEX

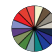


Available for special  
order only

CF means Center Front Seam  
Our CF measurement is taken from the high shoulder point.

White Jersey Fabric Content  
92% Nylon/ 8% Spandex



 = All solid jersey colours available to order. Colours not shown will ship up to 6 weeks from order date. See page 32 for all colour options.

## TOPS



CF Measurement  
27"

### SPLICE V-NECK GO TO TOP

Style #: 22364-4

Sizes: 2 - 18

M.S.R.P.: \$165.00

Wholesale: \$75.00

Color: **TAUPE**

Fabric Composition: 94% POLYESTER/6% SPANDEX



Black



Navy



Stone Blue



Taupe



CF Measurement  
28"

### SPLICE POCKET TOP

Style #: 22326-0

Sizes: 2 - 18

M.S.R.P.: \$194.00

Wholesale: \$88.00

Color: **CASHEW**

Fabric Composition: 94% POLYESTER/6% SPANDEX



Black



Cashew



Stone Blue



Sepia



CF Measurement  
27"

### SPLICE ANGLE TOP

Style #: 22381-2

Sizes: 2 - 18

M.S.R.P.: \$179.00

Wholesale: \$81.00

Color: **EPSOM**

Fabric Composition: 94% POLYESTER/6% SPANDEX



Black



Epsom



Stone Blue



Taupe



CF Measurement  
26"

### SPLICE DOUBLE CUFF TOP

Style #: 22369-2

Sizes: 2 - 18

M.S.R.P.: \$179.00

Wholesale: \$81.00

Color: **STONE BLUE**

Fabric Composition: 94% POLYESTER/6% SPANDEX



Black



Navy



Stone Blue



CF Measurement  
24"

### TRIM BOXY TOP

Style #: 22390-3

Sizes: 2 - 18

M.S.R.P.: \$165.00

Wholesale: \$75.00

Color: **CASHEW**

Fabric Composition: 94% POLYESTER/6% SPANDEX



Black



Navy





Cashew



CF means Center Front Seam

Our CF measurement is taken from the high shoulder point.

 = All solid jersey colours available to order. Colours not shown will ship up to 6 weeks from order date. See page 32 for all colour options.

 = Limited colours are available to order. Colours not shown will ship up to 6 weeks from order date. See page 32 for all colour options.

## TOPS



CF Measurement  
27"

### SPLICE HOODIE

Style #: 22363-3  
 Sizes: 2 - 18  
 M.S.R.P.: \$194.00  
 Wholesale: \$88.00  
 Color: STONE BLUE  
 Fabric Composition: 94% POLYESTER/6% SPANDEX



CF Measurement  
26"

### FLIRTY PEPLUM TOP

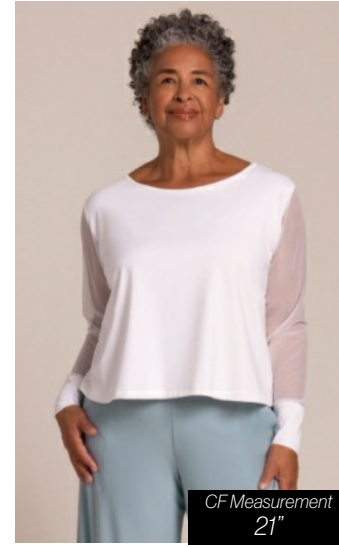
Style #: 22389-3  
 Sizes: 2 - 18  
 M.S.R.P.: \$170.00  
 Wholesale: \$77.00  
 Color: STONE BLUE  
 Fabric Composition: 94% POLYESTER/6% SPANDEX



CF Measurement  
24"

### BARELY T, MESH

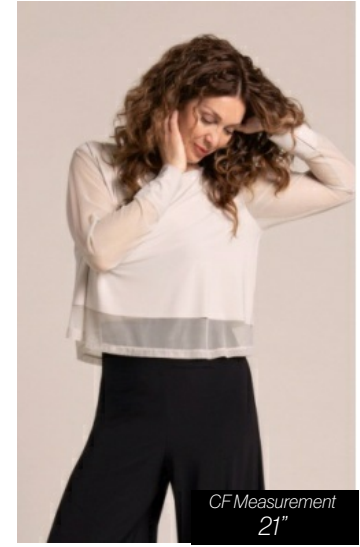
Style #: 3200-3  
 Sizes: 2 - 18  
 M.S.R.P.: \$95.00  
 Wholesale: \$43.00  
 Color: CASHEW  
 Fabric Composition: 85% POLYESTER / 15% SPANDEX



CF Measurement  
21"

### FUSION TOP

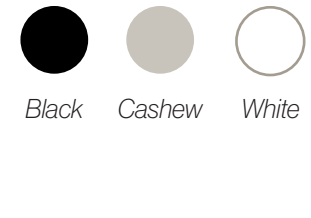
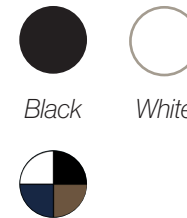
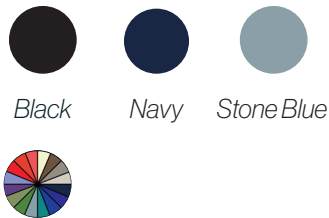
Style #: 322391-3  
 Sizes: 2 - 18  
 M.S.R.P.: \$139.00  
 Wholesale: \$63.00  
 Color: WHITE  
 Fabric Composition: 80% POLYESTER / 20% SPANDEX AND 94% POLYESTER/6% SPANDEX



CF Measurement  
21"

### FUSION CROP TOP

Style #: 322374-3  
 Sizes: 2 - 18  
 M.S.R.P.: \$135.00  
 Wholesale: \$61.00  
 Color: CASHEW  
 Fabric Composition: 80% POLYESTER / 20% SPANDEX AND 94% POLYESTER/6% SPANDEX



CF means Center Front Seam  
 Our CF measurement is taken from the high shoulder point.

White Jersey Fabric Content  
 92% Nylon/ 8% Spandex



 = Limited colours are available to order. Colours not shown will ship up to 6 weeks from order date. See page 32 for all colour options.

## TOPS



CF Measurement  
24"

### FUSION SWEATSHIRT

Style #: 322385-3  
Sizes: 2 - 18  
M.S.R.P.: \$170.00  
Wholesale: \$77.00  
Color: CASHEW  
Fabric Composition: 80% POLYESTER / 20% SPANDEX AND 94% POLYESTER/6% SPANDEX



CF Measurement  
25"

### FUSION DOLMAN TOP

Style #: 322392-0  
Sizes: 2 - 18  
M.S.R.P.: \$170.00  
Wholesale: \$77.00  
Color: CASHEW



CF Measurement  
27"

### STRIPE GO TO CLASSIC T RELAX, 3/4 SLEEVE

Style #: 22110RB-2  
Sizes: 2 - 18  
M.S.R.P.: \$126.00  
Wholesale: \$57.00  
Color: NAVY STRIPE  
Fabric Composition: 94% POLYESTER/6% SPANDEX



CF Measurement  
25"

### STRIPE DOLMAN POCKET TOP, CAP SLEEVE

Style #: 22266B-0  
Sizes: 2 - 18  
M.S.R.P.: \$146.00  
Wholesale: \$66.00  
Color: NAVY STRIPE  
Fabric Composition: 94% POLYESTER/6% SPANDEX



CF Measurement  
21"

### BREEZY RAGLAN TOP, H PRINT

Style #: 22341PH-2  
Sizes: 2 - 18  
M.S.R.P.: \$165.00  
Wholesale: \$75.00  
Color: NAVY STRIPE  
Fabric Composition: 94% POLYESTER/6% SPANDEX



Available for special  
order only



Black



Cashew



Navy Stripe



Navy Stripe



Navy Stripe

CF means Center Front Seam

Our CF measurement is taken from the high shoulder point.

## TOPS



CF Measurement  
24"

### TRIM BOXY TOP PRINT

Style #: 22390PD-3

Sizes: 2 - 18

M.S.R.P.: \$170.00

Wholesale: \$77.00

Color: NAVY STRIPE

Fabric Composition: 94% POLYESTER/6% SPANDEX



Navy Stripe



CF Measurement  
25"

### DOLMAN TOP PLACEMENT FLIP

Style #: 22347PF-0

Sizes: 2 - 18

M.S.R.P.: \$146.00

Wholesale: \$66.00

Color: SAND & SURF

Fabric Composition: 94% POLYESTER/6% SPANDEX



Sand & Surf



CF Measurement  
28"

### NU TRUE T, PLACEMENT FLIP, 3/4 SLV

Style #: 22310PF-2

Sizes: 2 - 18

M.S.R.P.: \$170.00

Wholesale: \$77.00

Color: SAND & SURF

Fabric Composition: 94% POLYESTER/6% SPANDEX



Sand & Surf  
'Available for special  
order only'



CF Measurement  
24"

### NU CLIP TOP, PRINT PLACEMENT

Style #: 22324PP-4

Sizes: 2 - 18

M.S.R.P.: \$150.00

Wholesale: \$68.00

Color: SURF & SAND


Fabric Composition: 94% POLYESTER/6% SPANDEX



Surf & Sand

CF means Center Front Seam  
Our CF measurement is taken from the high shoulder point.



 = All solid jersey colours available to order. Colours not shown will ship up to 6 weeks from order date. See page 32 for all colour options.

## TUNICS



CF Measurement  
29"

### NU IDEAL TUNIC, 3/4 SLEEVE

Style #: 23113-2

Sizes: 2 - 18

M.S.R.P.: \$150.00

Wholesale: \$68.00

Color: BLACK

Fabric Composition: 94% POLYESTER/6% SPANDEX



Black\*



CF Measurement  
29"

### NU IDEAL V-NECK TUNIC

Style #: 23235-2

Sizes: 2 - 18

M.S.R.P.: \$150.00

Wholesale: \$68.00

Color: BLACK

Fabric Composition: 94% POLYESTER/6% SPANDEX



Black\*



CF Measurement  
29"

### FUSION SPLIT BACK TUNIC

Style #: 323237-0

Sizes: 2 - 18

M.S.R.P.: \$179.00

Wholesale: \$81.00

Color: WHITE

Fabric Composition: 80% POLYESTER / 20% SPANDEX AND 94% POLYESTER/6% SPANDEX



Black

Cashew

White

### White Jersey Fabric Content

92% Nylon/ 8% Spandex

### \* Core Essentials Colours

Always In-Stock: Stock levels are based on forecasted demand and historical performance.

### CF means Center Front Seam

Our CF measurement is taken from the high shoulder point.




323237-0  
Fusion Split  
Back Tunic  
Cashew

21120R  
Go To Tank  
Relax  
Cashew

27317  
Splice Double  
Up Pant Crop  
Cashew

## VESTS, COVERS, CARDIGANS & JACKETS

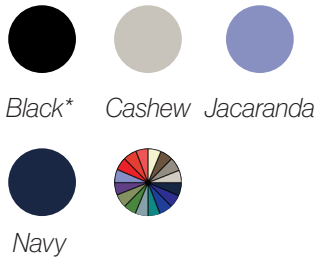
 = All solid jersey colours available to order. Colours not shown will ship up to 6 weeks from order date. See page 32 for all colour options.



CF Measurement  
20"

### V-NECK BOLERO

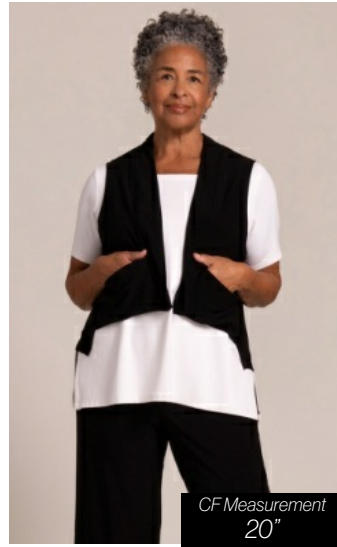
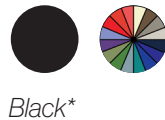
Style #: 25184-2  
Sizes: 2 - 18  
M.S.R.P.: \$150.00  
Wholesale: \$68.00  
Color: BLACK  
Fabric Composition: 94% POLYESTER/6% SPANDEX



CF Measurement  
28"

### NU CORE CARDIGAN

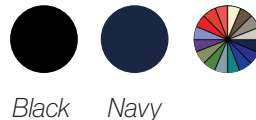
Style #: 25193-3  
Sizes: 2 - 18  
M.S.R.P.: \$194.00  
Wholesale: \$88.00  
Color: BLACK  
Fabric Composition: 94% POLYESTER/6% SPANDEX



CF Measurement  
20"

### CROPPED CORE VEST

Style #: 25189  
Sizes: 2 - 18  
M.S.R.P.: \$150.00  
Wholesale: \$68.00  
Color: BLACK  
Fabric Composition: 94% POLYESTER/6% SPANDEX



CF Measurement  
25"

### SPLICE ROLL NECK VEST

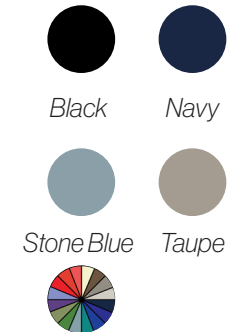
Style #: 25198  
Sizes: 2 - 18  
M.S.R.P.: \$216.00  
Wholesale: \$98.00  
Color: CASHEW  
Fabric Composition: 94% POLYESTER/6% SPANDEX



CF Measurement  
32"

### SPLICE VEST LONG

Style #: 25168L  
Sizes: 2 - 18  
M.S.R.P.: \$209.00  
Wholesale: \$95.00  
Color: STONE BLUE  
Fabric Composition: 94% POLYESTER/6% SPANDEX




CF means Center Front Seam  
Our CF measurement is taken from the high shoulder point.

\* Core Essentials Colours  
Always In-Stock. Stock levels are based on forecasted demand and historical performance.



# VESTS, COVERS, CARDIGANS & JACKETS

 = All solid jersey colours available to order. Colours not shown will ship up to 6 weeks from order date. See page 32 for all colour options.



CF Measurement  
20"

## CROPPED LANTERN JACKET W/ ZIP FRONT

Style #: 25158-2  
Sizes: 2 - 18  
M.S.R.P.: \$275.00  
Wholesale: \$125.00  
Color: CASHEW  
Fabric Composition: 94% POLYESTER/6% SPANDEX



Black



Cashew



CF Measurement  
27"

## SPLICE CARDIGAN

Style #: 25186-3  
Sizes: 2 - 18  
M.S.R.P.: \$150.00  
Wholesale: \$68.00  
Color: TAUPE  
Fabric Composition: 94% POLYESTER/6% SPANDEX



Black



Cashew



Taupe



CF Measurement  
25"

## SPLICE ROLL NECK CARDIGAN

Style #: 25180-3  
Sizes: 2 - 18  
M.S.R.P.: \$225.00  
Wholesale: \$102.00  
Color: STONE BLUE  
Fabric Composition: 94% POLYESTER/6% SPANDEX



Black



Cashew



Epsom



Stone Blue



Taupe



CF Measurement  
37"

## SPLICE DUSTER

Style #: 25179-3  
Sizes: 2 - 18  
M.S.R.P.: \$275.00  
Wholesale: \$125.00  
Color: STONE BLUE  
Fabric Composition: 94% POLYESTER/6% SPANDEX



Black



Navy



Stone Blue



Taupe



CF Measurement  
21"

## MEZZA LUNA CARDIGAN, MESH

Style #: 325177-4  
Sizes: 2 - 18  
M.S.R.P.: \$159.00  
Wholesale: \$72.00  
Color: WHITE  
Fabric Composition: 80% POLYESTER / 20% SPANDEX AND 94% POLYESTER/6% SPANDEX



Black



Cashew



White

CF means Center Front Seam  
Our CF measurement is taken from the high shoulder point.

White Jersey Fabric Content  
92% Nylon/ 8% Spandex

## VESTS, COVERS, CARDIGANS & JACKETS



= Limited colours are available to order. Colours not shown will ship up to 6 weeks from order date.

See page 32 for all colour options.



CF Measurement  
40"

### FUSION COVER LONG

Style #: 325196-4

Sizes: 2 - 18

M.S.R.P.: \$205.00

Wholesale: \$93.00

Color: BLACK

Fabric Composition: 80% POLYESTER / 20% SPANDEX AND 94% POLYESTER/6% SPANDEX



Black



CF Measurement  
27"

### CLASSIC JACKET WITH PLEATED SLEEVES, D PRINT

Style #: 25169PD-2

Sizes: 2 - 18

M.S.R.P.: \$225.00

Wholesale: \$102.00

Color: NAVY STRIPE

Fabric Composition: 94% POLYESTER/6% SPANDEX



Navy Stripe

CF means Center Front Seam

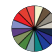
Our CF measurement is taken from the high shoulder point.



22381-2  
Splice Angle Top  
Epsom

27251  
Side Slit Wide Capri  
Epsom



 = All solid jersey colours available to order. Colours not shown will ship up to 6 weeks from order date. See page 32 for all colour options.

## BOTTOMS



Inseam 26"

### LEGGING

Style #: 2742  
 Sizes: 2 - 18  
 M.S.R.P.: \$115.00  
 Wholesale: \$52.00  
 Color: BLACK  
 Fabric Composition: 94% POLYESTER/6% SPANDEX



Inseam 26"

### NU YOKE LEGGING

Style #: 27218  
 Sizes: 2 - 18  
 M.S.R.P.: \$119.00  
 Wholesale: \$54.00  
 Color: BLACK  
 Fabric Composition: 94% POLYESTER/6% SPANDEX



Inseam 24"

### NARROW PANT SHORT

Style #: 2748S  
 Sizes: 2 - 18  
 M.S.R.P.: \$135.00  
 Wholesale: \$61.00  
 Color: BLACK  
 Fabric Composition: 94% POLYESTER/6% SPANDEX



Inseam 26"

### NARROW PANT ANKLE

Style #: 2748A  
 Sizes: 2 - 18  
 M.S.R.P.: \$141.00  
 Wholesale: \$64.00  
 Color: BLACK  
 Fabric Composition: 94% POLYESTER/6% SPANDEX



Inseam 28"

### NARROW PANT MIDI

Style #: 2748M  
 Sizes: 2 - 18  
 M.S.R.P.: \$141.00  
 Wholesale: \$64.00  
 Color: BLACK  
 Fabric Composition: 94% POLYESTER/6% SPANDEX



Black



Black\*



Black\* White



Black\*



Black\* White Navy\*



Cashew Lapis Taupe



Sepia Stone Blue

### \* Core Essentials Colours

Always In-Stock. Stock levels are based on forecasted demand and historical performance.

### White Jersey Fabric Content

92% Nylon/ 8% Spandex



## BOTTOMS



### NARROW PANT LONG

Style #: 2748L  
 Sizes: 2 - 18  
 M.S.R.P.: \$146.00  
 Wholesale: \$66.00  
 Color: BLACK  
 Fabric Composition: 94% POLYESTER/6% SPANDEX



Black



### NU STRAIGHT LEG SHORT

Style #: 27272S  
 Sizes: 2 - 18  
 M.S.R.P.: \$126.00  
 Wholesale: \$57.00  
 Color: BLACK  
 Fabric Composition: 94% POLYESTER/6% SPANDEX



Black White



### NU STRAIGHT LEG CROP

Style #: 27272C  
 Sizes: 2 - 18  
 M.S.R.P.: \$176.00  
 Wholesale: \$80.00  
 Color: BLACK  
 Fabric Composition: 94% POLYESTER/6% SPANDEX



Black\* Cashew



Navy White



White Jersey Fabric Content  
 92% Nylon/ 8% Spandex



### NU STRAIGHT LEG PANT

Style #: 27272  
 Sizes: 2 - 18  
 M.S.R.P.: \$185.00  
 Wholesale: \$84.00  
 Color: BLACK  
 Fabric Composition: 94% POLYESTER/6% SPANDEX



Black\*



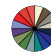
### STRAIGHT LEG PANT WITH YOKE CROPPED

Style #: 27303C  
 Sizes: 2 - 18  
 M.S.R.P.: \$190.00  
 Wholesale: \$86.00  
 Color: BLACK  
 Fabric Composition: 94% POLYESTER/6% SPANDEX



Black

\* Core Essentials Colours  
 Always In-Stock: Stock levels are based on forecasted demand and historical performance.

 = All solid jersey colours available to order. Colours not shown will ship up to 6 weeks from order date. See page 32 for all colour options.

## BOTTOMS



Inseam 26"

### STRAIGHT LEG PANT, ANKLE

Style #: 27303A

Sizes: 2 - 18

M.S.R.P.: \$194.00

Wholesale: \$88.00

Color: BLACK

Fabric Composition: 94% POLYESTER/6% SPANDEX



Inseam 31"

### STRAIGHT LEG PANT WITH YOKE

Style #: 27303

Sizes: 2 - 18

M.S.R.P.: \$201.00

Wholesale: \$91.00

Color: BLACK

Fabric Composition: 94% POLYESTER/6% SPANDEX



Inseam 28"

### TRUMPET LEG PANT

Style #: 27296

Sizes: 2 - 18

M.S.R.P.: \$216.00

Wholesale: \$98.00

Color: SEPIA

Fabric Composition: 94% POLYESTER/6% SPANDEX



Inseam 31"

### RAPT PANT

Style #: 2787

Sizes: 2 - 18

M.S.R.P.: \$201.00

Wholesale: \$91.00

Color: STONE BLUE

Fabric Composition: 94% POLYESTER/6% SPANDEX



Inseam 24"

### NARROW LANTERN PANT

Style #: 27237

Sizes: 2 - 18

M.S.R.P.: \$201.00

Wholesale: \$91.00

Color: WHITE

Fabric Composition: WHITE JERSEY: 92% NYLON/8% SPANDEX



Black

Lapis



Black



Black

Sepia



Black\*

Cashew

Stone Blue



Black\*

Navy\*

Taupe



Cashew



White



Stone Blue



Sepia




Batista



White Jersey Fabric Content  
92% Nylon/ 8% Spandex

\* Core Essentials Colours  
Always In-Stock: Stock levels are based on forecasted demand and historical performance.

 = All solid jersey colours available to order. Colours not shown will ship up to 6 weeks from order date. See page 32 for all colour options.

## BOTTOMS



Inseam 24"

### SIDE SLIT WIDE CAPRI

Style #: 27251  
 Sizes: 2 - 18  
 M.S.R.P.: \$205.00  
 Wholesale: \$93.00  
 Color: EPSOM  
 Fabric Composition: 94% POLYESTER/6% SPANDEX



Black Cashew Epsom



Jacaranda Taupe Navy



Batista



Inseam 24"

### HEPBURN CROP PANT

Style #: 27287C  
 Sizes: 2 - 18  
 M.S.R.P.: \$176.00  
 Wholesale: \$80.00  
 Color: WHITE  
 Fabric Composition: 94% POLYESTER/6% SPANDEX



Black Navy White



Inseam 26"

### HEPBURN ANKLE PANT

Style #: 27287A  
 Sizes: 2 - 18  
 M.S.R.P.: \$185.00  
 Wholesale: \$84.00  
 Color: BLACK  
 Fabric Composition: 94% POLYESTER/6% SPANDEX



Black Navy



Inseam 24"

### NARROW BARREL PANT

Style #: 27304  
 Sizes: 2 - 18  
 M.S.R.P.: \$176.00  
 Wholesale: \$80.00  
 Color: BLACK  
 Fabric Composition: 94% POLYESTER/6% SPANDEX



Black Cashew



Navy Sepia



Inseam 24"

### SPLICE LANTERN PANT

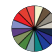
Style #: 27315  
 Sizes: 2 - 18  
 M.S.R.P.: \$209.00  
 Wholesale: \$95.00  
 Color: CASHEW  
 Fabric Composition: 94% POLYESTER/6% SPANDEX



Black Cashew Sepia





 = All solid jersey colours available to order. Colours not shown will ship up to 6 weeks from order date. See page 32 for all colour options.

## BOTTOMS



*Inseam 24"*

### SPICE DOUBLE-UP PANT CROP

Style #: 27317

Sizes: 2 - 18

M.S.R.P.: \$165.00

Wholesale: \$75.00

Color: BLACK

Fabric Composition: 94% POLYESTER/6% SPANDEX



*Black Cashew*



*Stone Blue Taupe*



*Inseam 26"*

### SPICE PENCIL PANT

Style #: 27318

Sizes: 2 - 18

M.S.R.P.: \$190.00

Wholesale: \$86.00

Color: TAUPE

Fabric Composition: 94% POLYESTER/6% SPANDEX



*Black Taupe*



*Inseam 24"*

### SPICE CARGO PANT

Style #: 27319

Sizes: 2 - 18

M.S.R.P.: \$205.00

Wholesale: \$93.00

Color: NAVY

Fabric Composition: 94% POLYESTER/6% SPANDEX



*Black Navy Stone Blue*



*Inseam 28"*

### NU PIVOT PANT

Style #: 27320

Sizes: 2 - 18

M.S.R.P.: \$185.00

Wholesale: \$84.00

Color: BLACK

Fabric Composition: 94% POLYESTER/6% SPANDEX



*Black Navy*



*Inseam 26"*

### NARROW DREAM PANT

Style #: 27321

Sizes: 2 - 18

M.S.R.P.: \$190.00

Wholesale: \$86.00

Color: CASHEW

Fabric Composition: 94% POLYESTER/6% SPANDEX





*Black*



## Effortless Layering

Seamlessly Mix with Seasonal Pieces or Core Basics.

 = All solid jersey colours available to order. Colours not shown will ship up to 6 weeks from order date. See page 32 for all colour options.

 = Limited colours are available to order. Colours not shown will ship up to 6 weeks from order date. See page 32 for all colour options.

## BOTTOMS



Inseam 19"

### PALAZZO GAUCHO

Style #: 27322  
 Sizes: 2 - 18  
 M.S.R.P.: \$190.00  
 Wholesale: \$86.00  
 Color: NAVY  
 Fabric Composition: 94% POLYESTER/6% SPANDEX



Inseam 24"

### FUSION NARROW PANT SHORT

Style #: 32748S  
 Sizes: 2 - 18  
 M.S.R.P.: \$146.00  
 Wholesale: \$66.00  
 Color: BLACK  
 Fabric Composition: 80% POLYESTER / 20% SPANDEX AND 94% POLYESTER/6% SPANDEX



Inseam 28"

### FUSION TRUMPET PANT

Style #: 327296  
 Sizes: 2 - 18  
 M.S.R.P.: \$225.00  
 Wholesale: \$102.00  
 Color: BLACK  
 Fabric Composition: 80% POLYESTER / 20% SPANDEX AND 94% POLYESTER/6% SPANDEX



Inseam 26"

### HEPBURN ANKLE PANT, D PRINT

Style #: 27287APD  
 Sizes: 2 - 18  
 M.S.R.P.: \$190.00  
 Wholesale: \$86.00  
 Color: NAVY STRIPE  
 Fabric Composition: 94% POLYESTER/6% SPANDEX



Inseam 24"

### NARROW LANTERN PANT PLACEMENT PRINT

Style #: 27237PP  
 Sizes: 2 - 18  
 M.S.R.P.: \$205.00  
 Wholesale: \$93.00  
 Color: SURF & SAND  
 Fabric Composition: 94% POLYESTER/6% SPANDEX



Black Navy



Black



Black Cashew



Navy Stripe



Surf & Sand

## Timeless Classics

### Meet Artful Twists

# Uncompromising Quality

Crafted With Care & Built to Last

## BOTTOMS



Inseam 28"

### TRUMPET PANT, PLACEMENT PRINT

Style #: 27296PP

Sizes: 2 - 18

M.S.R.P.: \$220.00

Wholesale: \$100.00

Color: SURF & SAND

Fabric Composition: 94% POLYESTER/6% SPANDEX



Surf & Sand



PONTE

Inseam 28"

### LUX NARROW PANT MIDI

Style #: S6700M

Sizes: 2 - 18

M.S.R.P.: \$159.00

Wholesale: \$72.00

Color: WHITE

Fabric Composition: 40% TENCEL/47% NYLON/13% SPANDEX



Black



White



PONTE

Inseam 26"

### LUX YOKE NARROW ANKLE PANT

Style #: S6709

Sizes: 2 - 18

M.S.R.P.: \$159.00

Wholesale: \$80.00

Color: BLACK

Fabric Composition: 40% TENCEL/47% NYLON/13% SPANDEX



Black




White



21224  
Flounce Muscle Top  
W/ Drop Hem  
Black

327296  
Fusion Trumpet Pant  
Black



 = All solid jersey colours available to order. Colours not shown will ship up to 6 weeks from order date. See page 32 for all colour options.

## SKIRTS



*Outseam 25"*

### TUBE SKIRT MIDI

Style #: 2689  
 Sizes: 2 - 18  
 M.S.R.P.: \$161.00  
 Wholesale: \$73.00  
 Color: BLACK  
 Fabric Composition: 94% POLYESTER/6% SPANDEX



*Outseam 17"*

### MINI SKIRT

Style #: 2641  
 Sizes: 2 - 18  
 M.S.R.P.: \$80.00  
 Wholesale: \$36.00  
 Color: BLACK  
 Fabric Composition: 94% POLYESTER/6% SPANDEX



*Front  
 Outseam 31"*

### FLOUNCE A-LINE MIDI SKIRT

Style #: 2699  
 Sizes: 2 - 18  
 M.S.R.P.: \$190.00  
 Wholesale: \$86.00  
 Color: STONE BLUE  
 Fabric Composition: 94% POLYESTER/6% SPANDEX



*Outseam 35"*

### ESSENTIAL A-LINE SKIRT, D PRINT

Style #: 2696PD  
 Sizes: 2 - 18  
 M.S.R.P.: \$170.00  
 Wholesale: \$77.00  
 Color: NAVY STRIPE  
 Fabric Composition: 94% POLYESTER/6% SPANDEX



*Outseam 35"*

### ESSENTIAL A-LINE SKIRT, PLACEMENT PRINT

Style #: 2696PP  
 Sizes: 2 - 18  
 M.S.R.P.: \$170.00  
 Wholesale: \$77.00  
 Color: SURF & SAND  
 Fabric Composition: 94% POLYESTER/6% SPANDEX



*Black\**



*Black*



*Black*



*Stone Blue*



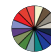
*Navy Stripe*



*Surf & Sand*

\* Core Essentials Colours

*Always In-Stock. Stock levels are based on forecasted demand and historical performance.*

 = All solid jersey colours available to order. Colours not shown will ship up to 6 weeks from order date. See page 32 for all colour options.

## DRESSES



CF Measurement  
41"

### NU TANK DRESS SHORT

Style #: 28176  
Sizes: 2 - 18  
M.S.R.P.: \$150.00  
Wholesale: \$68.00  
Color: BLACK  
Fabric Composition: 94% POLYESTER/6% SPANDEX



CF Measurement  
38"

### NU TRAPEZE DRESS, ELBOW SLEEVE

Style #: 28174-4  
Sizes: 2 - 18  
M.S.R.P.: \$170.00  
Wholesale: \$77.00  
Color: BLACK  
Fabric Composition: 94% POLYESTER/6% SPANDEX



CF Measurement  
46"

### FIT AND FLARE DRESS

Style #: 28198-1  
Sizes: 2 - 18  
M.S.R.P.: \$165.00  
Wholesale: \$75.00  
Color: BLACK  
Fabric Composition: 94% POLYESTER/6% SPANDEX



Reversible

CF Measurement  
46"

### DRAMA DRESS, 3/4 SLV

Style #: 2864-2  
Sizes: 2 - 18  
M.S.R.P.: \$245.00  
Wholesale: \$111.00  
Color: STONE BLUE  
Fabric Composition: 94% POLYESTER/6% SPANDEX



CF Measurement  
42"

### SLEEVELESS SLANT POCKET DRESS

Style #: 2888  
Sizes: 2 - 18  
M.S.R.P.: \$220.00  
Wholesale: \$100.00  
Color: NAVY  
Fabric Composition: 94% POLYESTER/6% SPANDEX



Black\* Cashew Navy



Taupe



Black\* Cashew Navy



Black\* Jacaranda Lapis



Stone Blue Navy




Black\* Stone Blue



Navy

#### \* Core Essentials Colours

Always In-Stock: Stock levels are based on forecasted demand and historical performance.

 = All solid jersey colours available to order. Colours not shown will ship up to 6 weeks from order date. See page 32 for all colour options.

## DRESSES



CF Measurement  
51"

### SLEEVELESS DREAM DRESS

Style #: 28104  
Sizes: 2 - 18  
M.S.R.P.: \$249.00  
Wholesale: \$113.00  
Color: SEPIA  
Fabric Composition: 94% POLYESTER/6% SPANDEX



CF Measurement  
40"

### SPLICE POCKET DRESS

Style #: 28182-0  
Sizes: 2 - 18  
M.S.R.P.: \$240.00  
Wholesale: \$109.00  
Color: STONE BLUE  
Fabric Composition: 94% POLYESTER/6% SPANDEX



CF Measurement  
45"

### SPLICE V-NECK DRESS

Style #: 28197-0  
Sizes: 2 - 18  
M.S.R.P.: \$194.00  
Wholesale: \$88.00  
Color: STONE BLUE  
Fabric Composition: 94% POLYESTER/6% SPANDEX



CF Measurement  
45"

### SPLICE V-NECK DRESS, 3/4 SLV

Style #: 28197-2  
Sizes: 2 - 18  
M.S.R.P.: \$194.00  
Wholesale: \$88.00  
Color: BLACK  
Fabric Composition: 94% POLYESTER/6% SPANDEX



CF Measurement  
46"

### SQUARE NECK FIT AND FLARE DRESS

Style #: 28199  
Sizes: 2 - 18  
M.S.R.P.: \$161.00  
Wholesale: \$73.00  
Color: BLACK  
Fabric Composition: 94% POLYESTER/6% SPANDEX



Black Navy



Jacaranda Sepia



Stone Blue



Black Navy



Epsom Stone Blue



Black Taupe

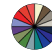


Black Stone Blue Navy



CF means Center Front Seam  
Our CF measurement is taken from the high shoulder point.



 = All solid jersey colours available to order. Colours not shown will ship up to 6 weeks from order date. See page 32 for all colour options.

## DRESSES



CF Measurement  
51"

### T-SHIRT DRESS

Style #: 28209P-1  
Sizes: 2 - 18  
M.S.R.P.: \$194.00  
Wholesale: \$88.00  
Color: BATISTA  
Fabric Composition: 94% POLYESTER/6% SPANDEX



Batista



CF Measurement  
47"

### V-NECK NARROW LANTERN DRESS

Style #: 28213-2  
Sizes: 2 - 18  
M.S.R.P.: \$249.00  
Wholesale: \$113.00  
Color: JACARANDA  
Fabric Composition: 94% POLYESTER/6% SPANDEX



Black



Jacaranda



CF Measurement  
51"

### TUCKED-IN JUMPER

Style #: 28207  
Sizes: 2 - 18  
M.S.R.P.: \$249.00  
Wholesale: \$113.00  
Color: CASHEW  
Fabric Composition: 94% POLYESTER/6% SPANDEX



Black



Cashew



CF Measurement  
41"

### FLOUNCE FUNNEL NECK DRESS, PRINT D

Style #: 28181PD-0  
Sizes: 2 - 18  
M.S.R.P.: \$220.00  
Wholesale: \$100.00  
Color: NAVY STRIPE  
Fabric Composition: 94% POLYESTER/6% SPANDEX



Navy Stripe



CF Measurement  
42"

### SLEEVELESS SLANT POCKET DRESS, D PRINT

Style #: 28186PD  
Sizes: 2 - 18  
M.S.R.P.: \$275.00  
Wholesale: \$125.00  
Color: NAVY STRIPE  
Fabric Composition: 94% POLYESTER/6% SPANDEX



Navy Stripe

CF means Center Front Seam

Our CF measurement is taken from the high shoulder point.

\* Proven Best Colours (PB)

Always In-Stock: Stock levels are based on forecasted demand and historical performance.

## DRESSES



CF Measurement  
38"

### NU TRAPEZE DRESS, PLACEMENT PRINT

Style #: 28174PP-2

Sizes: 2 - 18

M.S.R.P.: \$179.00

Wholesale: \$81.00

Color: SURF & SAND

Fabric Composition: 94% POLYESTER/6% SPANDEX



Surf & Sand



CF Measurement  
38"

### TRAPEZE DRESS, PLACEMENT FLIP, 3/4 SLV

Style #: 28174PF-2

Sizes: 2 - 18

M.S.R.P.: \$179.00

Wholesale: \$81.00

Color: SAND & SURF

Fabric Composition: 94% POLYESTER/6% SPANDEX



Sand & Surf



CF Measurement  
51"

### V-NECK SLIT DRESS, PLACEMENT PRINT

Style #: 28183PP-2

Sizes: 2 - 18

M.S.R.P.: \$209.00

Wholesale: \$95.00

Color: SURF & SAND

Fabric Composition: 94% POLYESTER/6% SPANDEX



Surf & Sand

CF means Center Front Seam

Our CF measurement is taken from the high shoulder point.



PW21243  
Pop V-Neck Tank  
Black

PW27304  
Pop Narrow Barrel  
Pant, Lined  
White





= Limited colours are available to order. Colours not shown will ship up to 6 weeks from order date. See page 32 for all colour options.

## POPCORN WAFFLE SLEEVELESS

## POPCORN WAFFLE TOPS



CF Measurement  
27"

### SLVLESS DBL LAYER SHELL W/ JEWEL NECK, POPCORN WAF

Style #: PW21226

Sizes: 2 - 18

M.S.R.P.: \$168.00

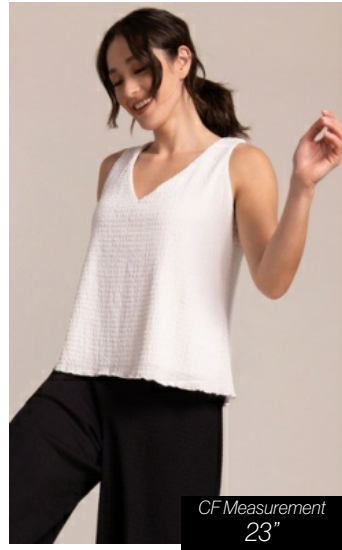
Wholesale: \$76.00

Color: WHITE

Fabric Composition: 98% POLYESTER / 2% SPANDEX



Black White



CF Measurement  
23"

### POP V-NECK TANK

Style #: PW21243

Sizes: 2 - 18

M.S.R.P.: \$146.00

Wholesale: \$66.00

Color: WHITE

Fabric Composition: 98% POLYESTER / 2% SPANDEX



Black Lemon Chiffon White



CF Measurement  
20"

### POP CROPPED CORE VEST

Style #: PW25189

Sizes: 2 - 18

M.S.R.P.: \$150.00

Wholesale: \$68.00

Color: BLACK

Fabric Composition: 98% POLYESTER / 2% SPANDEX



Black



CF Measurement  
24"

### POP CREW NECK TOP, LONG SLV

Style #: PW22379-3

Sizes: 2 - 18

M.S.R.P.: \$126.00

Wholesale: \$57.00

Color: WHITE

Fabric Composition: 98% POLYESTER / 2% SPANDEX



Black Lemon Chiffon White



CF Measurement  
24"

### POP TRIM BOXY TOP

Style #: PW22390-3

Sizes: 2 - 18

M.S.R.P.: \$165.00

Wholesale: \$75.00

Color: WHITE

Fabric Composition: 98% POLYESTER / 2% SPANDEX



Black White



CF means Center Front Seam

Our CF measurement is taken from the high shoulder point.

White Jersey Fabric Content

92% Nylon/ 8% Spandex





= Limited colours are available to order. Colours not shown will ship up to 6 weeks from order date. See page 32 for all colour options.

## POPCORN WAFFLE BOTTOMS



Inseam 26"

### HALF CUFF JOGGER PANT, POPCORN WAFFLE

Style #: PW27291  
Sizes: 2 - 18  
M.S.R.P.: \$220.00  
Wholesale: \$100.00  
Color: **BLACK**  
Fabric Composition: 98% POLYESTER / 2% SPANDEX



Inseam 24"

### POP NARROW BARREL PANT

Style #: PW27304  
Sizes: 2 - 18  
M.S.R.P.: \$176.00  
Wholesale: \$80.00  
Color: **BLACK**  
Fabric Composition: 98% POLYESTER / 2% SPANDEX



Inseam 22"

### POP WIDE CAPRI LINED

Style #: PW27324  
Sizes: 2 - 18  
M.S.R.P.: \$185.00  
Wholesale: \$84.00  
Color: **WHITE**  
Fabric Composition: 98% POLYESTER / 2% SPANDEX

## POPCORN WAFFLE DRESSES / JUMPER



CF Measurement  
47"

### POP DRESS, LINED

Style #: PW28214  
Sizes: 2 - 18  
M.S.R.P.: \$260.00  
Wholesale: \$118.00  
Color: **WHITE**  
Fabric Composition: 98% POLYESTER / 2% SPANDEX



CF Measurement  
51"

### POP TUCKED-IN JUMPER

Style #: PW28207  
Sizes: 2 - 18  
M.S.R.P.: \$249.00  
Wholesale: \$113.00  
Color: **BLACK**  
Fabric Composition: 98% POLYESTER / 2% SPANDEX



Black



Not available  
in White



Black



White



White is lined  
with jersey



Black



White



White is lined  
with jersey



Black



White



Lemon Chiffon



White is lined  
with jersey



Black



Not available  
in White


## Sophisticated Textures & Drapes

Bring A Tastful Touch of Elegant Flare

CF means Center Front Seam  
Our CF measurement is taken from the high shoulder point.

White Jersey Fabric Content  
92% Nylon/ 8% Spandex

# HONEYCOMB VESTS, COVERS, CARDIGANS & JACKETS

 = Limited colours are available to order. Colours not shown will ship up to 6 weeks from order date. See page 32 for all colour options.



CF Measurement  
29"

## HONEYCOMB RAGLAN PULLOVER

Style #: HON22376-3  
Sizes: XS - XL  
M.S.R.P.: \$154.00  
Wholesale: \$70.00  
Color: WHITE  
Fabric Composition:  
POLY(84%)PVA(3%)SPAN(13%)



CF Measurement  
25"

## HONEYCOMB BOXY TOP

Style #: HON22362-0  
Sizes: XS - XL  
M.S.R.P.: \$154.00  
Wholesale: \$70.00  
Color: WHITE  
Fabric Composition:  
POLY(84%)PVA(3%)SPAN(13%)



CF Measurement  
29"

## HONEYCOMB EZ TUCK TOP

Style #: HON22366-4  
Sizes: XS - XL  
M.S.R.P.: \$154.00  
Wholesale: \$70.00  
Color: NAVY  
Fabric Composition:  
POLY(84%)PVA(3%)SPAN(13%)



CF Measurement  
20"

## HONEYCOMB SHRUG

Style #: HON25178-2  
Sizes: XS - XL  
M.S.R.P.: \$165.00  
Wholesale: \$75.00  
Color: WHITE  
Fabric Composition:  
POLY(84%)PVA(3%)SPAN(13%)



CF Measurement  
29"

## HONEYCOMB KIMONO

Style #: HON25197-4  
Sizes: XS - XL  
M.S.R.P.: \$198.00  
Wholesale: \$90.00  
Color: BLACK  
Fabric Composition:  
POLY(84%)PVA(3%)SPAN(13%)



Black White



Black White Navy



Available for special  
order only



Black White Navy



Sepia



Black White Sepia



CF means Center Front Seam  
Our CF measurement is taken from the high shoulder point.

White Jersey Fabric Content  
92% Nylon/ 8% Spandex



## HONEYCOMB SLEEVELESS



### HONEYCOMB GREAT CARDIGAN

Style #: HON25194-3

Sizes: XS - XL

M.S.R.P.: \$198.00

Wholesale: \$90.00

Color: NAVY

Fabric Composition:

POLY(84%)PVA(3%)SPAN(13%)



Black



White



Sepia



Navy

### White Jersey Fabric Content

92% Nylon/ 8% Spandex

### CF means Center Front Seam

Our CF measurement is taken from the high shoulder point.



21120R  
Go To Tank  
White

HON25178-2  
Honeycomb Shrug  
Black

PW27304  
Pop Narrow Barrel  
Pant, Lined  
White



 = Limited colours are available to order. Colours not shown will ship up to 6 weeks from order date. See page 32 for all colour options.

## COTTON GAUZE SLEEVELESS

## COTTON GAUZE TOPS



CF Measurement  
26"

### BREEZE A-LINE TANK

Style #: C821235  
Sizes: XS - XL  
M.S.R.P.: \$150.00  
Wholesale: \$68.00  
Color: WHITE  
Fabric Composition: 100% COTTON



CF Measurement  
25"

### BREEZE OVERSHIRT

Style #: C823239-2  
Sizes: XS - XL  
M.S.R.P.: \$174.00  
Wholesale: \$79.00  
Color: STONE BLUE  
Fabric Composition: 100% COTTON



CF Measurement  
29"

### BREEZE BUTTON BACK TOP

Style #: C822388-0  
Sizes: XS - XL  
M.S.R.P.: \$159.00  
Wholesale: \$72.00  
Color: WHITE  
Fabric Composition: 100% COTTON



CF Measurement  
24"

### BREEZE HALF SLEEVE BOLERO SHIRT

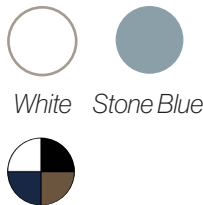
Style #: C82449-1  
Sizes: XS - XL  
M.S.R.P.: \$159.00  
Wholesale: \$72.00  
Color: WHITE  
Fabric Composition: 100% COTTON



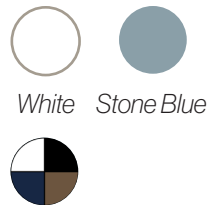
CF Measurement  
29"

### BREEZE EASY SHIRT

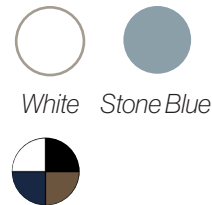
Style #: C82448-3  
Sizes: XS - XL  
M.S.R.P.: \$174.00  
Wholesale: \$79.00  
Color: WHITE  
Fabric Composition: 100% COTTON



White Stone Blue



White Stone Blue



White Stone Blue



White Stone Blue Sepia



White Stone Blue

CF means Center Front Seam

Our CF measurement is taken from the high shoulder point.

 = Limited colours are available to order. Colours not shown will ship up to 6 weeks from order date. See page 32 for all colour options.

## COTTON GAUZE TOPS



CF Measurement  
33"

### BREEZE SHARKTAIL SHIRT

Style #: C82446-3  
Sizes: XS - XL  
M.S.R.P.: \$225.00  
Wholesale: \$102.00  
Color: SEPIA  
Fabric Composition: 100% COTTON

## COTTON GAUZE BOTTOM



Inseam 24"

### BREEZE WIDE LEG CROP

Style #: C827323  
Sizes: XS - XL  
M.S.R.P.: \$154.00  
Wholesale: \$70.00  
Color: WHITE  
Fabric Composition: 100% COTTON

## COTTON GAUZE DRESSES/JUMPER



CF Measurement  
47"

### BREEZE EZ FLARE DRESS

Style #: C828193  
Sizes: XS - XL  
M.S.R.P.: \$198.00  
Wholesale: \$90.00  
Color: WHITE  
Fabric Composition: 100% COTTON



CF Measurement  
52"

### BREEZE FLARED JUMPSUIT

Style #: C828212  
Sizes: XS - XL  
M.S.R.P.: \$225.00  
Wholesale: \$102.00  
Color: SEPIA  
Fabric Composition: 100% COTTON



White Sepia



White Stone Blue Sepia



White Stone Blue Sepia



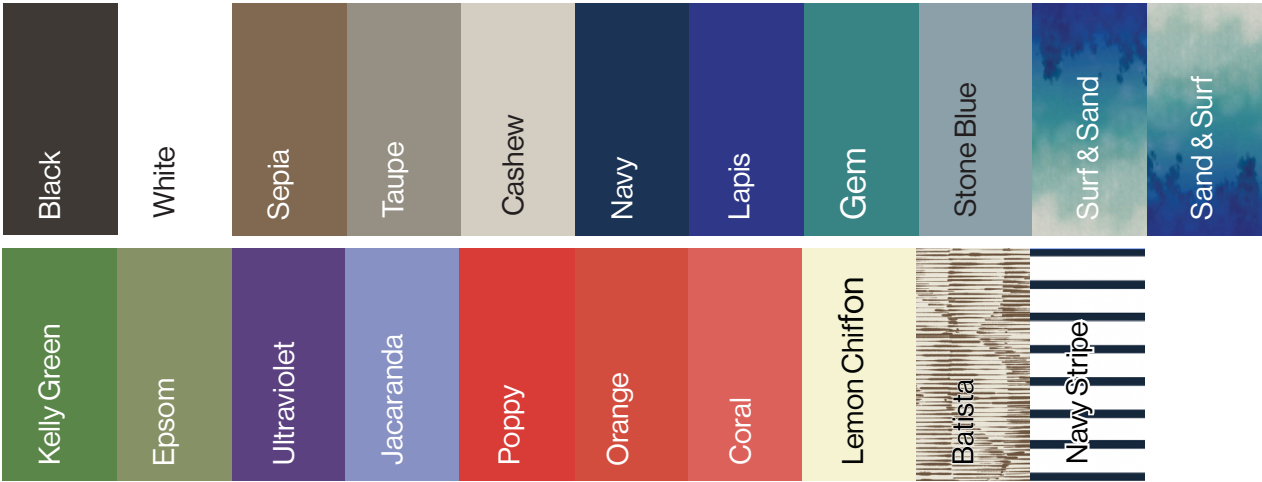
Available for special  
order only

CF means Center Front Seam  
Our CF measurement is taken from the high shoulder point.

# Available Colours & Fabrics

**Jersey**  
94% Polyester / 6% Spandex

**Available starting**  
February 1st 2025. Select colours available December 1st 2024\*



**\*Jersey colours available for delivery starting December 1st 2024:**

Black	Taupe	Navy
White	Cashew	Lapis
Gem	Kelly Green	Coral
Poppy	Orange	Lemon Chiffon

Select styles available in:



**Mesh**  
80% Polyester/20% Spandex

**Available starting**  
February 1st 2025



**Honeycomb Mesh**  
84% Polyester / 3% Polyvinyl Alcohol / 13% Spandex

**Available starting**  
February 1st 2025\*\*



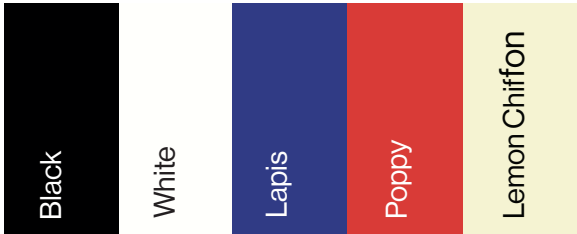
**Double Cotton Gauze**  
100% Cotton

**Available starting**  
March 1st 2025



**Popcorn Waffle**  
98% Polyester / 2% Spandex

**Available starting**  
February 1st 2025



**\*\*Select styles and colours available for December delivery. Refer to the resort insert for details.**



# Sales Representatives

## Canadian Territories

### **CORPORATE - Kerri Caswell**

Ontario + Atlantic Canada  
905-691-9971 | kerri@symplici.com

### **The Ordel Group Agency**

Western Canada | Libby or Eryne Ordel  
604-662-8989 | sales@ordelgroup.com

### **Agence Jackie Salama Inc.**

Quebec | Jackie Salama  
514-826-3919 | jsalama@videotron.ca

## US Territories

### **CORPORATE - Denine Mackie and Christina Vogl**

Southeast + S. California + AZ + S. Nevada  
Denine 727-614-5164 | denine@symplici.com  
Christina | christina@symplici.com

### **Charlotte Rae & CO**

Rocky Mountains | Charlotte Rae  
303-929-2306 | charlotteclackler220@gmail.com

### **Ed Truman Associates**

Southwest  
Sandi Truman 214-738-5341  
Ed Truman 214-215-4891  
sanditru@sbcglobal.net

### **Heart and Soul Sales**

New England & Mid Atlantic | Jesse Harris  
603-828-7945  
jesse@theharriscorp.net

### **James Goodman & Associates**

Midwest | James Goodman  
214-729-5511  
james@jamesgoodmanandassociates.com

### **Jacqueline Stone**

Pacific NW + N. California +  
N. Nevada | Jacqueline  
415-310-2301 | jacqstone114@gmail.com



# Seasonal Sales Support Tools



## NuORDER Retailer Portal **Buy Online Today!**

Contact customer service to find out how to access all of our retailer support assets, view live inventories and place your orders online.



## Co-op Advertising

Increase your visibility and support your sales efforts! Partner with Sympli to expand your marketing and advertising while sharing the cost with Sympli! You can also use your CoOp Dollars to purchase POP (point of purchase) for your store. Visit NuOrder for more information.



## Company Policies **Advertising & Ecommerce Policy**

Visit NuORDER for details regarding our current policies.



## Videos & High Resolution Images - Found on NuOrder


Download lifestyle and 360° product imagery, videos & more. Login to NuOrder today!

21227  
Flared Shell  
Black

27237  
Narrow Lantern Pant  
White





A full-body photograph of a woman with short, curly grey hair and glasses, standing on a grassy bank by a body of water. She is wearing a light blue long-sleeved vest over a taupe V-neck top and matching light blue wide-leg pants. She is holding a small, light-colored clutch bag.

22364-4  
Splice V-Neck  
Go To Top  
*Taupe*

25168L  
Splice Vest Long  
*Stone Blue*

27237  
Narrow Lantern  
Pant  
*Stone Blue*

A close-up photograph of two women. The woman in the foreground has long, wavy brown hair and is wearing a taupe V-neck top with a light blue vest draped over her shoulders. The woman in the background has short, curly grey hair and glasses, wearing a light blue vest over a taupe top.

22364-4  
Splice V-Neck Go To Top  
*Taupe*



# Delivery Guidelines By Order Type

Order Type		In-Store Delivery Window (Start - Cancel)	DEFINITIONS
<b>On-Season</b>  <b>PROVEN BEST &amp; CORE ESSENTIALS - Always In-Stock</b> Proven best-selling styles in core colours. Stock levels are based on forecasted demand and historical performance. <b>SEASONAL HOTLIST</b> – Replenished. On-season availability for Spring is in-store starting as early as February 1st and Fall in-store as early as August 1st. Stock levels are based on pre-season bookings. Will be replenished during peak selling months as raw materials allow. <b>WHILE QUANTITIES LAST (WQL)</b> Inventory available for immediate delivery. Items shipped on a first ordered - first shipped basis (OAC) while quantities last.		In-Store 6-12 business days from OAC date* unless otherwise indicated on the order confirmation.  Free shipping for on-season orders of \$1000* or more.  <i>*Order totals can not be combined to qualify for free shipping.</i>	<b>OAC (on approved credit):</b> The date of order release if the customer is in good standing and there are no credit issues.  <b>PREPAID:</b> Paid in advance of shipping by credit card, cheque or EFT, or shipped COD.  <b>START:</b> Start of the IN-STORE delivery window.  <b>CANCEL:</b> End of the IN-STORE delivery window.
<b>Pre-Season</b>  Orders for new season styles and colours placed prior to November 30th for Spring and May 31st for Fall.  Special offerings (early season or limited release window) to be determined each season with details published at time of new season release.	<b>Spring Orders Placed</b>  <ul style="list-style-type: none"> <li>• July 1 - November 30th</li> <li>• Orders placed after November 30th will deliver as early as February 1st, based on our production capacity.</li> </ul> <b>Fall Orders Placed</b>  <ul style="list-style-type: none"> <li>• January 1st - May 31st</li> <li>• Orders placed after May 31st will deliver as early as August 1st, based on our production capacity.</li> </ul>	<b>In-Store Starting</b>  <ul style="list-style-type: none"> <li>• February 1 - 15th</li> <li>• Check NuORDER for next available in-store date</li> </ul> <b>In-Store Starting</b>  <ul style="list-style-type: none"> <li>• August 1 - 15th</li> <li>• Check NuORDER for next available in-store date</li> </ul>	Minimum \$2,500 shipped per season  Fall Season: July 1st - December 31st Spring Season: January 1st - June

*\* In-store windows can be later per customer's desired delivery schedule.*



PW21226  
Sleeveless Double Layer  
Shell with Jewel Neck,  
Popcorn Waffle  
Black

PW25189  
Pop Cropped Core Vest  
Black

## Host A Trunk Show

Discover an exclusive assortment featuring top-selling styles from our Spring 2025 collection.

### WHY HOST A TRUNK SHOW?

- ✓ Explore a comprehensive range of this season's most popular styles and vibrant colours, introducing both your customers and staff to our finest selection.
- ✓ Seize a risk-free opportunity for incremental sales.
- ✓ Get up to 100% coverage on trunk show advertising using your co-op dollars

*Reach out to your sales representative for further information.*

# General Terms and Conditions of Sales and Delivery



## Shipping Terms

The title to goods and risks pass from WHD to a customer as follows:

- All shipments to Canadian customers are FOB Vancouver, BC.
- All shipments to US customers are FOB Blaine, WA.



## Standard Payment Terms

Net 30 On Approved Credit. Accounts will be shipped up to the assigned credit limit approved by WHD. New accounts with no industry credit will be placed either on COD terms or credit card pre-payment until sufficient credit history is established.



## Conditions

All orders are subject to credit approval, acceptance by WHD, and product availability. WHD has the right to not ship orders to past due accounts.

WHD has the right to deliver goods after the CANCEL date up to 7 calendar days if goods were shipped within the specified shipment window and are still in-transit. WHD reserves the right to deliver goods to the store 15 calendar days before the requested in-store delivery date (START) without notification.



## Returns

A Return Authorization must be obtained from WHD within 14 days of receipt of goods. Exchange or credit will be issued for returns due to quality issues or shipping errors. Returns for other reasons may be allowed at the discretion of WHD and subject to 10% restocking fee.



## Ecommerce

Any advertisements and/or selling of Symplic products via on-line platforms must adhere to our Advertising and Ecommerce Policies & Guidelines.











21120R  
Go To Tank Relax  
*Jacaranda*

HON25194-3  
Honeycomb Kimono  
*Sepia*

27296  
Trumpet Pant  
*Sepia*

# sympli®

Scan QR code to view upcoming market dates and  
contact information for our sales team.



 **NuORDER**

Place your orders on NuOrder  
<https://app.next.nuorder.com/sympli>

888-988-9885  
[sales@sympli.com](mailto:sales@sympli.com)

[sympli.com](https://www.sympli.com)  
[@symplistyle](https://www.instagram.com/symplistyle)



Proudly Canadian